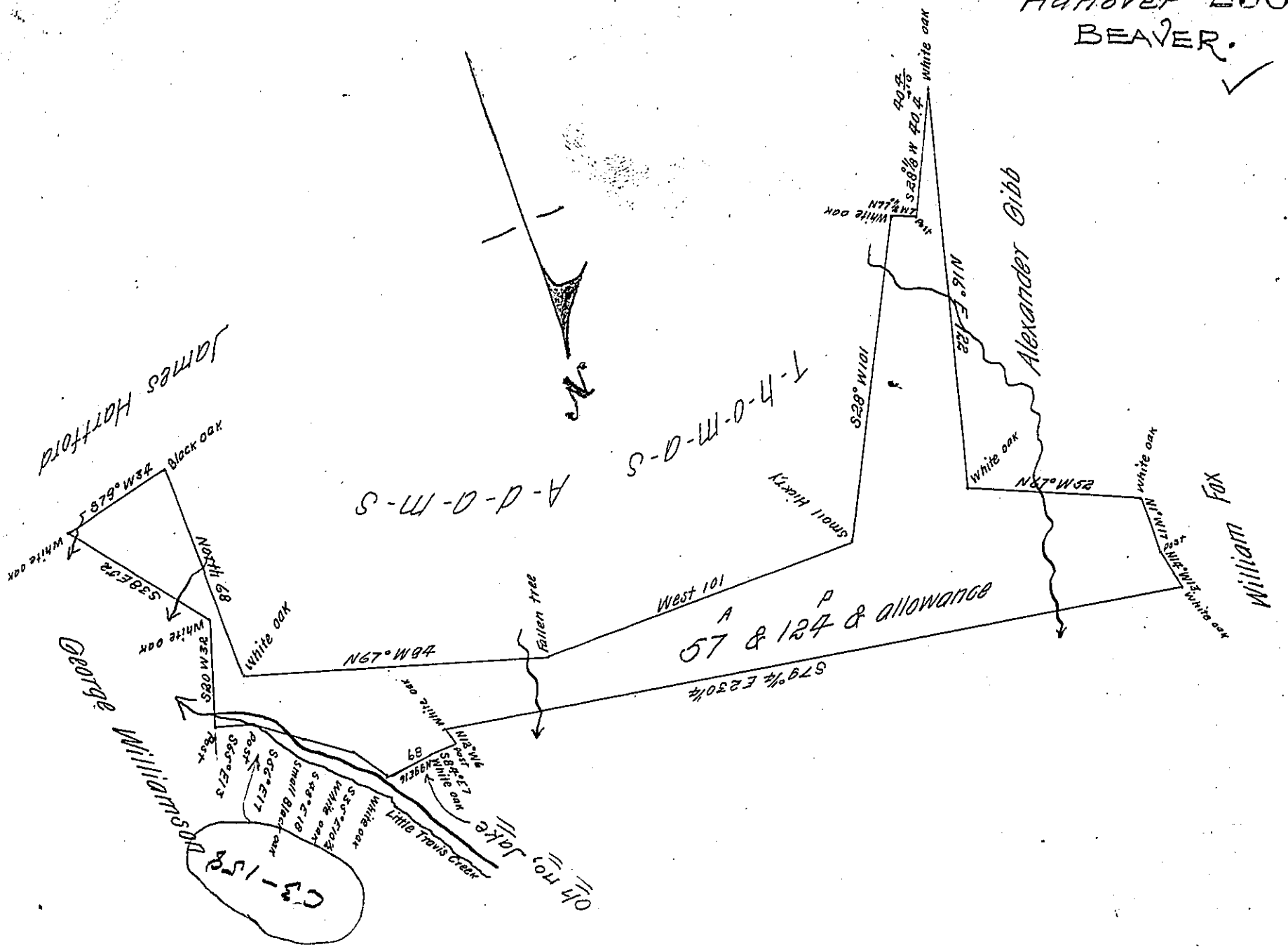


Hanover 296  
BEAVER. ✓



The above is the draught of a tract of land situate on the waters of Little Travis creek in Hanover township and county of Beaver surveyed March 22<sup>d</sup> 1842 in pursuance of a Warrant granted to William Emler of said county dated the 11<sup>th</sup> January 1842 for 53 acres & 20 perches containing fifty seven acres and one hundred and ~~thirty six~~ <sup>twenty four</sup> perches, with the allowance of six per cent for roads.

John Hawke

Approved by me W<sup>m</sup> Minis Jr. D.S

IN TESTIMONY that the above is a copy of the original remaining on file in the Department of Internal Affairs of Pennsylvania, made conformably to an Act of Assembly approved the 16th day of February, 1833, I have hereunto set my Hand and caused the Seal of said Department to be affixed at Harrisburg, this fourteenth day of September 1904.

*Loac B. Brown*  
Secretary of Internal Affairs.